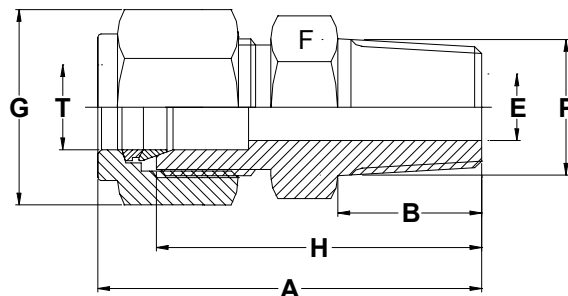


**MALE CONNECTOR (STUD END TAPER THREAD)  
METRIC OD TUBES X NPT THREAD-N**



								PART NO.
	NPT (M)	mm	mm	mm	mm	mm	mm	
3	1/8	30.5	2.4	11	11	23.9		D-MC3-N2
3	1/4	35.6	2.4	14	11	29.0		D-MC3-N4
6	1/8	32.8	4.8	14	14	25.4		D-MC6-N2
6	1/4	37.9	4.8	14	14	30.5		D-MC6-N4
6	3/8	38.4	4.8	19	14	31.0		D-MC6-N6
6	1/2	44.7	4.8	20	14	37.3		D-MC6-N8
8	1/8	34.2	4.8	14	16	26.7		D-MC8-N2
8	1/4	38.7	6.3	14	16	31.2		D-MC8-N4
8	3/8	39.3	6.3	19	16	31.8		D-MC8-N6
8	1/2	45.6	6.3	22	16	38.1		D-MC8-N8
10	1/8	36.3	4.8	17	19	28.7		D-MC10-N2
10	1/4	40.9	7.9	19	19	33.3		D-MC10-N4
10	3/8	40.9	7.9	19	19	33.3		D-MC10-N6
10	1/2	46.5	7.9	22	19	38.9		D-MC10-N8
12	1/4	43.4	7.1	22	22	33.3		D-MC12-N4
12	3/8	43.4	9.5	22	22	33.3		D-MC12-N6
12	1/2	49	9.5	22	22	38.9		D-MC12-N8
12	3/4	50.5	9.5	27	22	40.4		D-MC12-N12
12	1	57.1	9.5	35	22	47.0		D-MC12-N16
14	3/8	44.1	9.5	24	25	34.0		D-MC14-N6
14	1/2	49	11.1	24	25	38.9		D-MC14-N8
16	3/8	44.1	9.5	24	25	34.0		D-MC16-N6
16	1/2	49	11.9	24	25	38.9		D-MC16-N8
16	3/4	50.5	12.7	27	25	40.4		D-MC16-N12
18	1/2	50.5	11.9	27	30	40.4		D-MC18-N8
18	3/4	50.5	15.1	27	30	40.4		D-MC18-N12
20	1/2	52.3	15.9	30	32	42.2		D-MC20-N8
20	3/4	57.1	18.3	35	32	42.2		D-MC20-N12
25	1/2	57.5	11.9	35	38	45.2		D-MC25-N8
25	3/4	57.5	15.8	35	38	45.2		D-MC25-N12
25	1	62.3	21.8	35	38	50.0		D-MC25-N16

**S.D.INDUSTRIES.**

An ISO 9001 : 2000 Company

**Hydraulics, Pneumatics, Instrumentation Fittings, Manifolds & Valves**

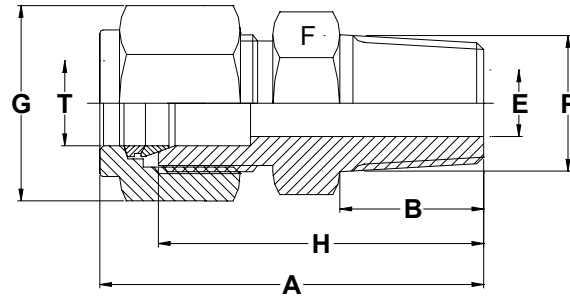
2/10, Singh Industrial Estate, Ram Mandir Road, Goregaon (W), Mumbai-400 104, India

◆ Phone: +91 22 28791745 / 55 / 56 ◆ Fax: +91 22 28752130

◆ Email: [sdind@vsnl.com](mailto:sdind@vsnl.com) ◆ [www.sdindustries.com](http://www.sdindustries.com)

**"We Deliver Confidence Through Quality Products."**

**MALE CONNECTOR (STUD END TAPER THREAD)  
METRIC OD TUBES X NPT THREAD-N**



TUBE OD - T	P	A	E	F	G	H	PART NO.
	NPT (M)	mm	mm	mm	mm	mm	
1/8	1/8	30.5	2.4	11	11	23.9	2D-MCN
1/8	1/4	35.6	2.4	14	11	29.0	2-4D-MCN
1/4	1/8	32.8	4.8	14	14	25.4	4-2D-MCN
1/4	1/4	37.8	4.8	14	14	30.5	4D-MCN
1/4	3/8	38.4	4.8	19	14	31.0	4-6D-MCN
1/4	1/2	44.7	4.8	22	14	37.4	4-8D-MCN
5/16	1/4	38.6	6.3	14	16	31.2	5-4D-MCN
3/8	1/8	35.3	4.8	16	17	27.9	6-2D-MCN
3/8	1/4	39.8	7.1	16	17	32.5	6-4D-MCN
3/8	3/8	39.8	7.1	19	17	32.5	6D-MCN
3/8	1/2	46.8	7.1	22	17	38.9	6-8D-MCN
1/2	1/4	43.4	7.1	22	22	33.3	8-4D-MCN
1/2	3/8	43.4	9.6	22	22	33.3	8-6D-MCN
1/2	1/2	49	10.4	22	22	38.9	8D-MCN
1/2	3/4	50.5	10.4	27	22	40.4	8-12D-MCN
1/2	1	57.1	10.4	35	22	47.0	8-16D-MCN
5/8	3/8	44.2	9.6	24	25	34.0	10-6D-MCN
5/8	1/2	49	10.4	24	25	38.9	10-8D-MCN
3/4	1/2	50.5	10.4	27	28.5	40.4	12-8D-MCN
3/4	3/4	50.5	15.8	27	28.5	40.4	12D-MCN
3/4	1	57.1	15.8	35	28.5	47.0	12-16D-MCN
7/8	3/4	50.5	15.8	30	32	40.4	14-12D-MCN
1	1/2	57.4	10.4	35	38	45.2	16-8D-MCN
1	3/4	57.4	15.8	35	38	45.2	16-12D-MCN
1	1	62.2	22.3	35	38	50.0	16D-MCN

**S.D.INDUSTRIES.**

An ISO 9001 : 2000 Company

**Hydraulics, Pneumatics, Instrumentation Fittings, Manifolds & Valves**

2/10, Singh Industrial Estate, Ram Mandir Road, Goregaon (W), Mumbai-400 104, India

◆ Phone: +91 22 28791745 / 55 / 56 ◆ Fax: +91 22 28752130

◆ Email: [sdind@vsnl.com](mailto:sdind@vsnl.com) ◆ [www.sdindustries.com](http://www.sdindustries.com)

***"We Deliver Confidence Through Quality Products."***