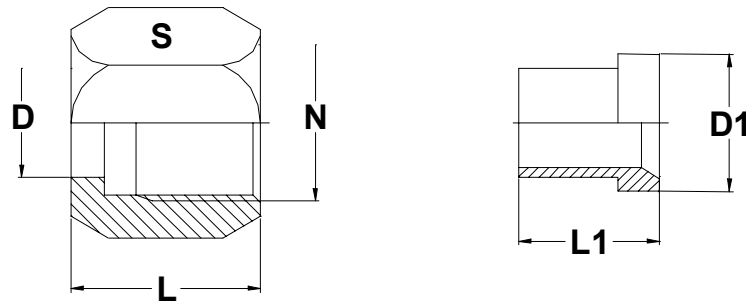


## NUT AND SLEEVES



TUBE OD		UN / UNF N	S mm	L mm	D mm	L1 mm	D1 mm	PART NO.	
mm	inch							NUT	SLEEVE
6	1/4	7/16 -20	14	15.5	7.8	10.4	9.7	4F-N	4F-S
8	5/16	1/2 -20	17	17	9.5	11.2	11.3	5F-N	5F-S
10	3/8	9/16 -18	19	18.3	11.2	12.7	12.7	6F-N	6F-S
12	1/2	3/4 -16	22	21.3	14.5	14.2	17.3	8F-N	8F-S
14/15/16	5/8	7/8 -14	27	24.6	17.8	16.8	20.2	10F-N	10F-S
18/20	3/4	1 1/16 -12	32	25.9	21.2	17.3	24.7	12F-N	12F-S
25	1	1 5/16 -12	41	28.4	27.7	19.8	31	16F-N	16F-S
28/30/32	1 1/4	1 5/8 -12	50	31	34.2	23.1	38.9	20F-N	20F-S
35/38	1 1/2	1 7/8 -12	60	35.8	41	28.4	45.3	24F-N	24F-S

## **S.D.INDUSTRIES.**

An ISO 9001 : 2000 Company

**Hydraulics, Pneumatics, Instrumentation Fittings, Manifolds & Valves**

2/10, Singh Industrial Estate, Ram Mandir Road, Goregaon (W), Mumbai-400 104, India

◆ Phone: +91 22 28724724, +91 22 28738511 ◆ Fax: +91 22 28752130

◆ Email: [sdind@vsnl.com](mailto:sdind@vsnl.com) ◆ [www.sdinds.com](http://www.sdinds.com)

***"We Deliver Confidence Through Quality Products."***